

Atlas Track Cleaning Car M-1 decoder

N scale Ron Bearden

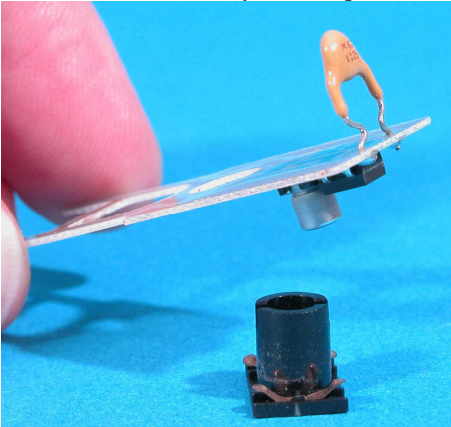


This track cleaning car needs a decoder for use on DCC.

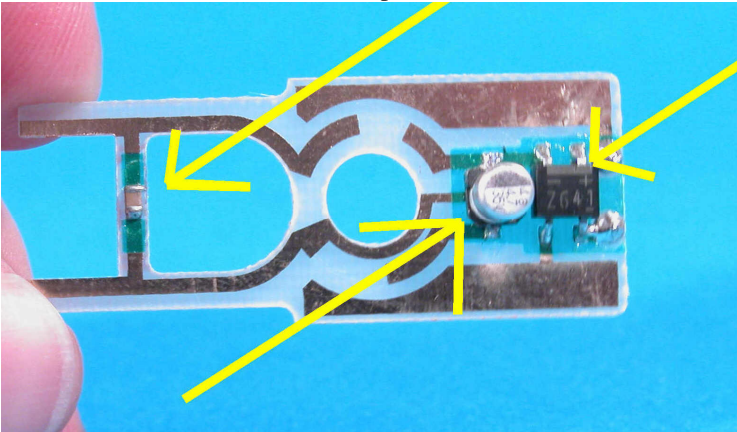
This installation was easy.

An M-1 decoder will fit nicely in the slot in the weight on the motor end (right side in this shot). Just remove the screw that holds the right truck. The roof will then come off.

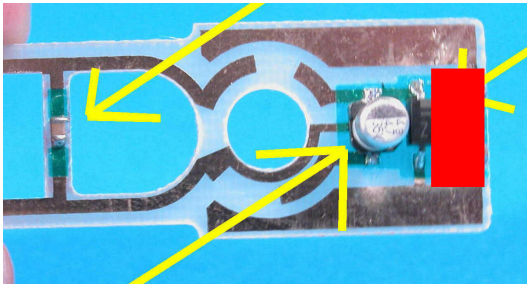
Pull the motor up and remove the circuit board. Note that there are four electronic components soldered to it. Remove all four. You can see the yellow capacitor is on the top side.



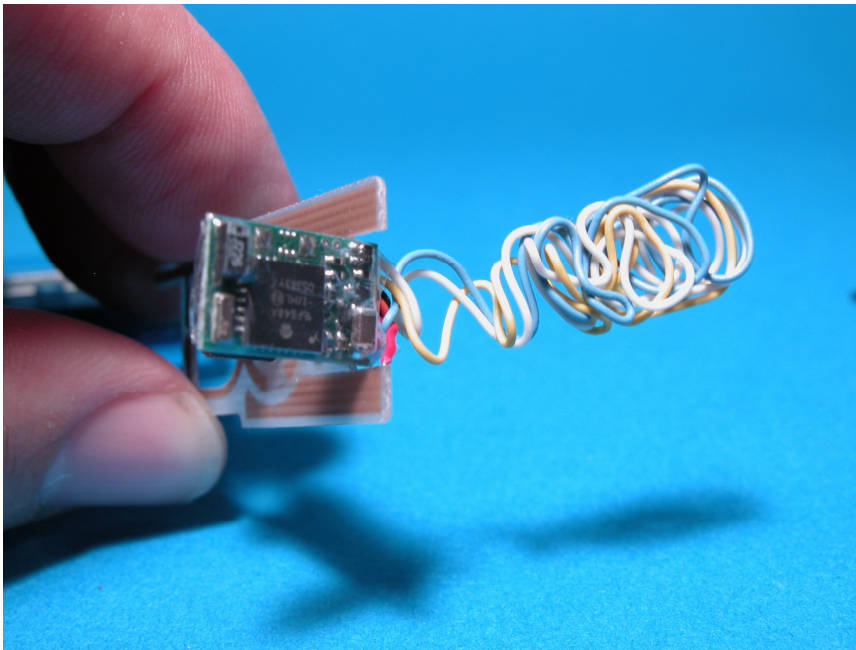
Remove all stock circuit board components on the bottom side. Don't forget that little tiny capacitor on the left!



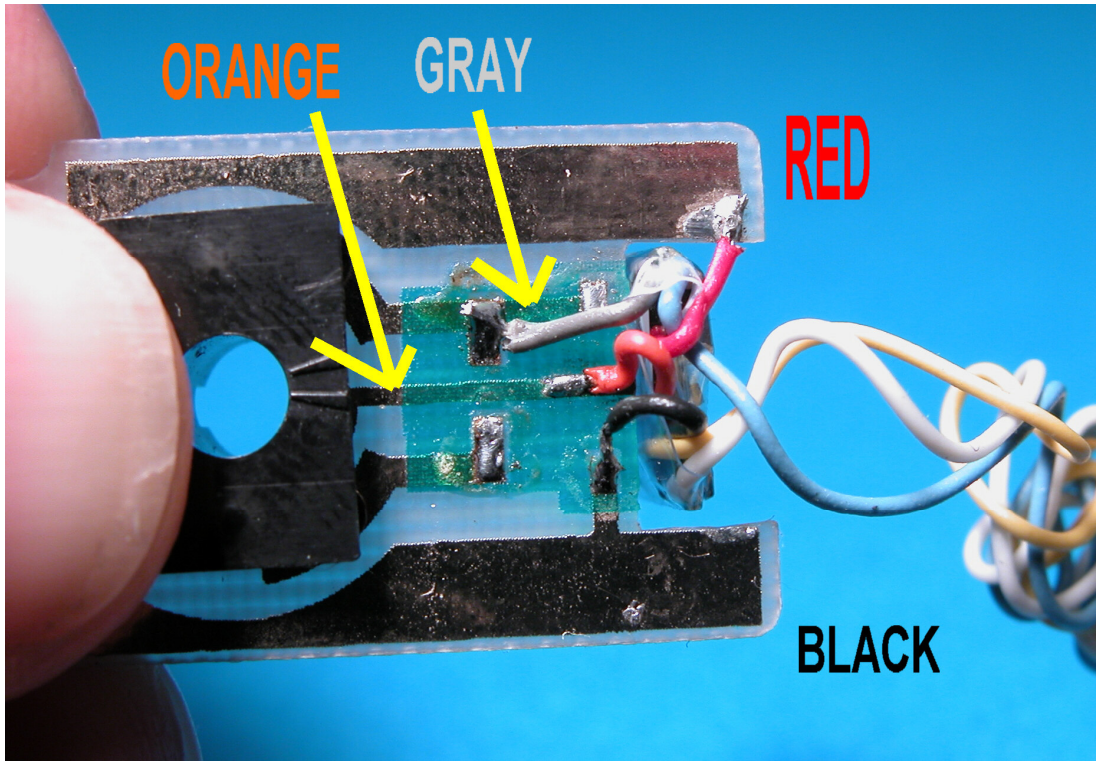
You must also cut a slot (in red) for the decoder. That slot would come about halfway through the black diode.



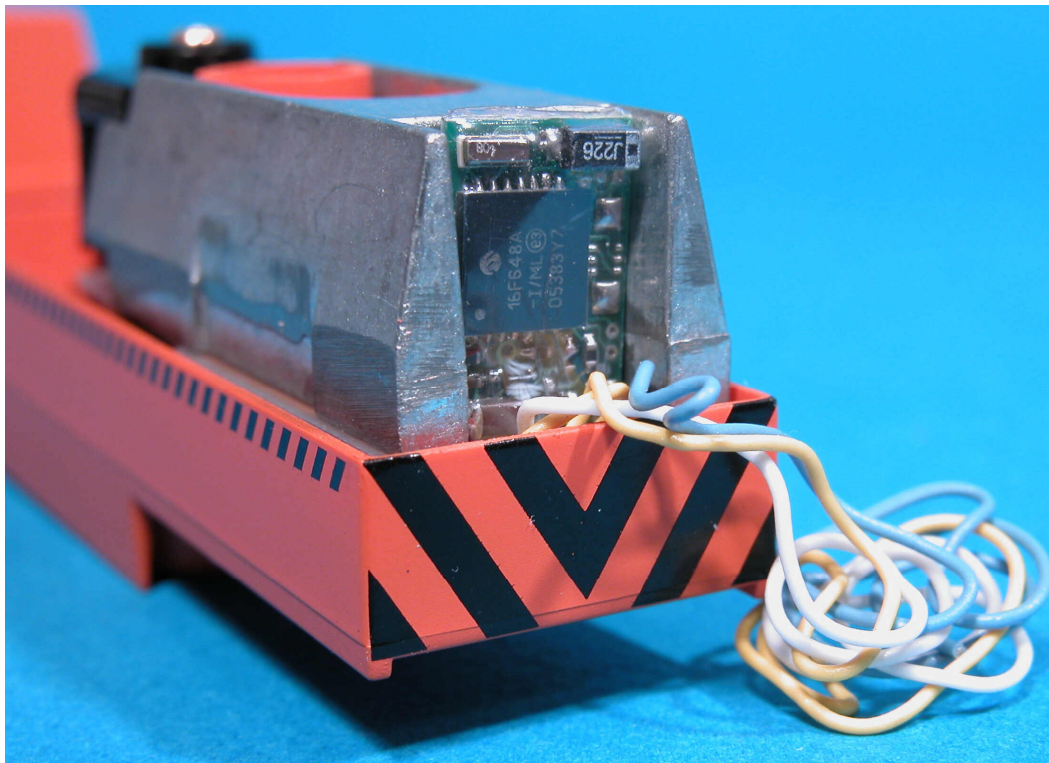
This shows the decoder in the slot that was cut.



Nothing mysterious about the wire locations.
Just follow the photo.
This view, of course, is of the bottom of the board.



Here is the M-1 decoder installed. I left lengths of function wires in case I want to add a flashing warning beacon later.



It looks like the M-1 was made to fit in that slot!